

Instructions for the patient Urine test – collection cup and vacuum tube

WHAT YOU NEED

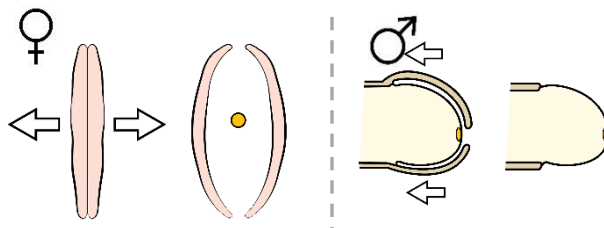
The collection cup and tube you received from your healthcare provider.

The collection cup should be emptied and disposed of after the sample is collected.

INSTRUCTIONS



Do not urinate for at least four hours prior to giving the sample.

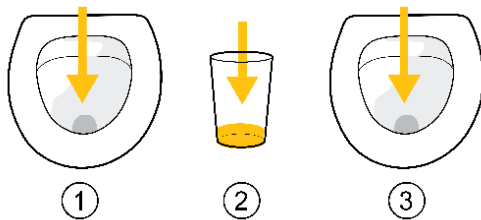


When taking the sample:

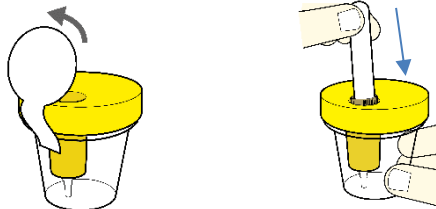
For women : Separate your labia.

In case of bleeding or discharge, insert a tampon in your vagina before taking the sample.

Man: Retract the foreskin.



- 1) Screw off the lid of the cup.
- 2) First urinate a little into the toilet.
- 3) Place the cup in the stream of urine and fill half the cup.
- 4) Finish urinating into the toilet.
- 5) Screw on the lid of the cup.



Remove the protective tape from the lid. Press down the test tube, cork first, in the transfer area on the lid.

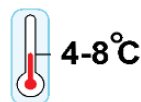
The test tube will full up with urine.

Keep the test tube in place until it has been filled.



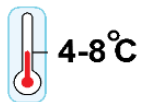
Mark the test tube with your entire national registration number (*personnummer*), name and the date and time the sample was taken. Use the label you received from your healthcare provider.

Attach the label to the test tube, lengthwise.



Store the test tube in a refrigerator or in a plastic bag containing ice.

G



Leave the test tube with your healthcare provider on the same day you took the sample. Transport the test tube in a plastic bag containing ice.

Bring a valid ID document.