

Heliport Hospital

LUND/Universitetssjukhuset

ESEM

1(2)

2026-03-24

Coordinates: 55° 42' 42" N 13° 11' 56" E
Elevation: 352 ft MSL

Ambulance and rescue flights only

PPR 15 min PN (00-24)

SOS Rescue Coordination centre

+46 (0)722 07 01 37

Heliport open when heliport beacon is ON

(Rakel 360 Hkp-Lund)

Heliport Elevated

FATO/TLOF Ø 29,3 m

D = 20 m, RD = 16 m

Surface: Concrete

MLW and MTOW = 11000 kg

Lights: Heliport beacon, perimeter lights, approach lights, flood lights, obstacle lights

Windsock on roof

Firefighting service: 3 foam monitors, fire extinguisher in control room

Information

Heliport crew: +46 (0)10 222 83 11

Heliport manager: +46 (0)724 65 75 39

County council: +46 (0)46 17 10 00

Approach and take-off directions

Zone	App- roach	Take-off	Obstacle free
A	110°	290°	4,5 %
B	290°	110°	4,5 %

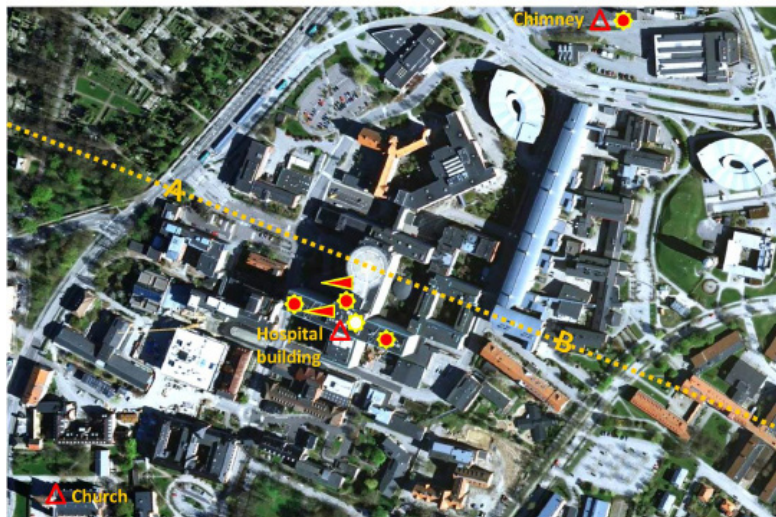
Noise abatement: Preferably use direction B

Obstacle

Object	Distance	Coordinates
Hospital building	45 m	55° 42' 41" N 13° 11' 54" E
Chimney	350 m	55° 42' 50" N 13° 12' 9" E
Church	390 m	55° 42' 35" N 13° 11' 37" E
Building	1160 m	55° 43' 3" N 13° 12' 50" E

Temporary regulations and restrictions

are published on www.skane.se/heliport



Obstacle



Obstacle light



Heliport beacon



Windsock

Heliport Hospital

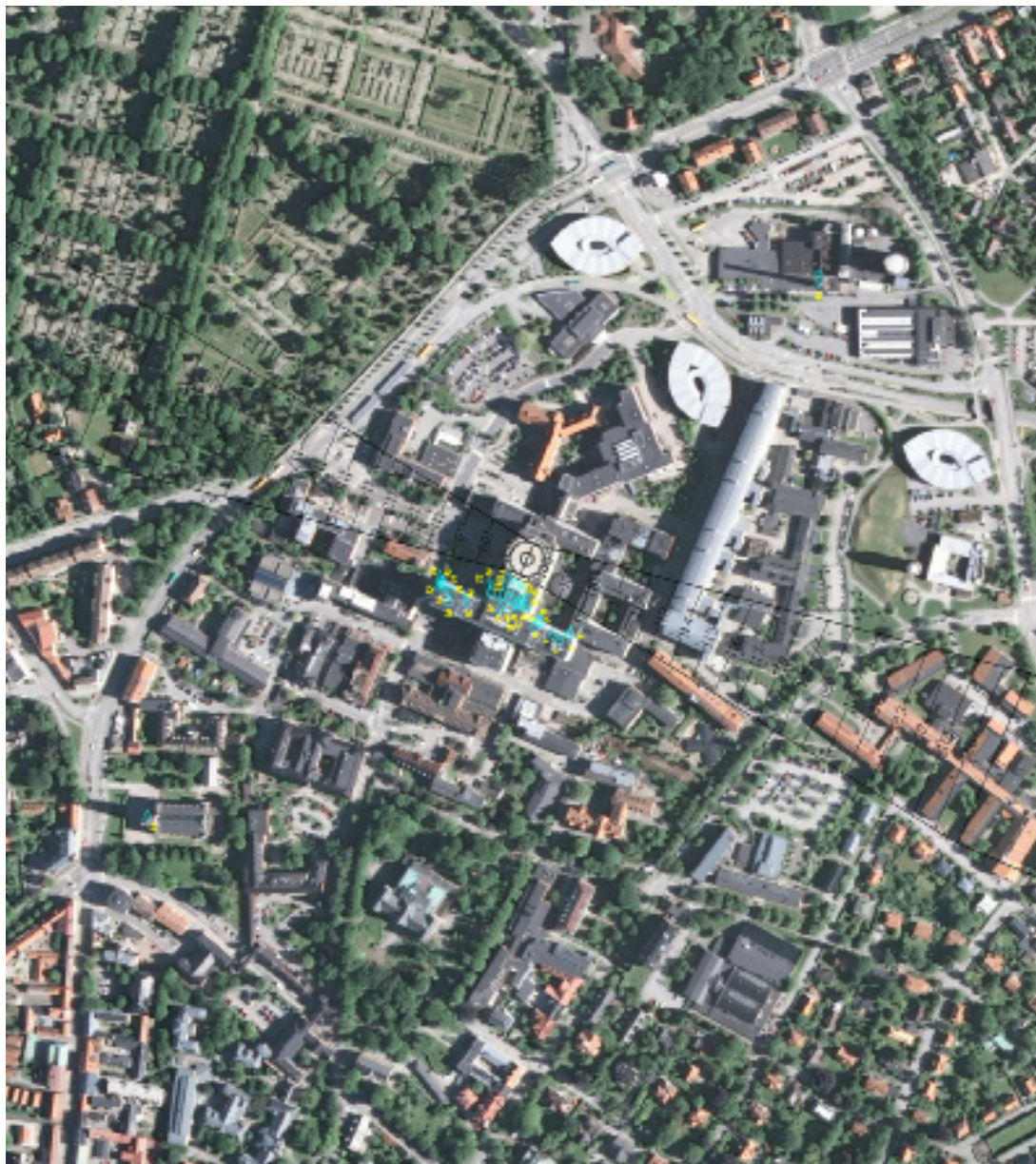
LUND/Universitetssjukhuset

ESEM

2(2)

Coordinates: 55° 42' 42" N 13° 11' 56" E

Elevation: 352 ft MSL



Skånes universitetssjukhus

En del av Region Skåne